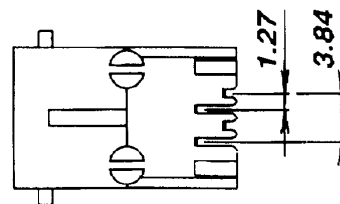


PCB LAYOUT



SPECIFICATION :

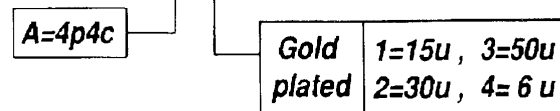
1. Electrical Char.

- Insulation Resistance : 500M-Ohm Min.
- Contact Resistance : 20milli-Ohm Max.
- Rating Current : 1.5A Max.
- Rating Voltage : 120V AC
- Dielectric Voltage : 1,000 RMS 60 Sec. Min.

2. Physical Char.

- Housing : PBT 20% Glass Filled (UL 94V-0)
- Color : Black Color
- Spring Wire : 0.35mm Thickness Phosphor Bronze
- Gold Plating Over Nickel
- Temperature Range : - 25 +90 C
- Durability : 500 Mating cycles Min.

HC-006-4 -A -X



HO CHIEN

www.hochien.com

TITLE

RJ11 SIDE ENTRY PCB JACK
UL & cUL FILE NO. E131820

MODULAR JACKS ASSY FOR
HC-006-4-A-X

SCALE SIZE DWG. NO. 9601 SERIES

| DO NOT SECALE DRAWING | TOLERANCES UNLESS OTHERWISE NOTED | INCH | MM | DR. | DATA |
|----------------------------|--------------------------------------|----------|----------------|--------|------------|
| THIRD ANGLE PROJECTION | LINEAR $\frac{MM}{INCH}$ | 00±0.1 | 00±0.25 | Steven | MAR-31 '03 |
| | | 000±0.05 | 000±0.13 | Johnn | MAR-31 '03 |
| MM INCH | ANGLE +0°30' | RAD/L | +0.45 -0.15 | Billy | MAR-31 '03 |

DWG. NO.

AS006001