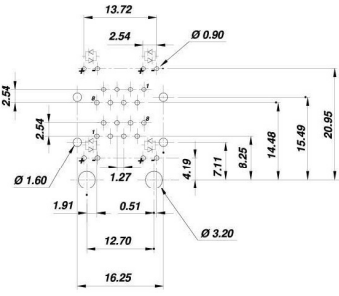
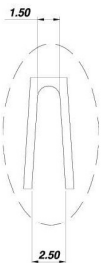
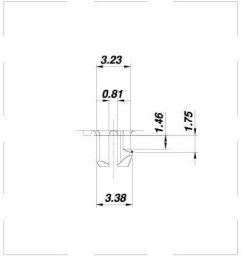
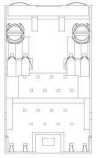
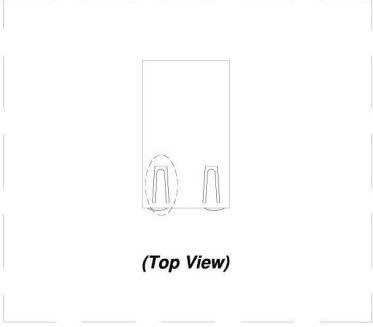
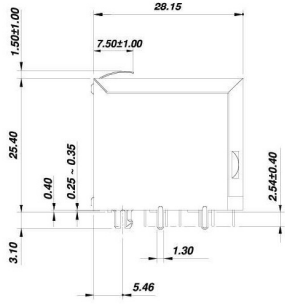
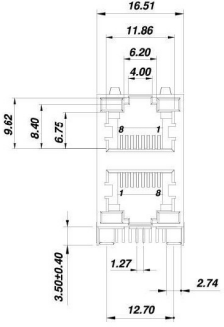
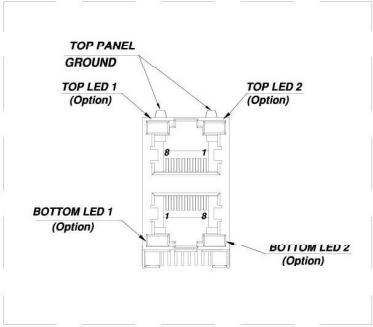


RoHS Compliant



PC Layout (Top View)

LED Designation :

Code	Forward	Reverse	Code	Forward	Reverse
G	Green	—	4	Yellow	Red
Y	Yellow	—	5	Green	Yellow
R	Red	—	6	Yellow	Green
O	Orange	—	9	Red	Green
1	Green	Orange	0	Red	Yellow
3	Green	Red			

7600-088-21-X XX



SPECIFICATION :

1. Electrical Char.

- Insulation Resistance : 500M-Ohm Min. 500V DC. for 1 minute.
- Contact Resistance : 20milli-Ohm Max.
- Rating Current : 1.5A Max.
- Rating Voltage : 120V AC.
- Dielectric Voltage : 1,000 Vrms at 1MA 60 Sec. Min.

2. Physical char.

- Housing (Option) :
 - PBT Glass Filled (E202G30BK), Soldering Temperature:235°C
 - Nylon-46(TE250F6), Soldering Temperature:260°C
- Color : Black Color
- Spring Wire :
 - 0.35mm Thickness Phosphor bronze Gold Plating Over Nickel
- Shielded : 0.20mm Thickness Brass Plating Nickel
- Temperature Range : - 40°C / +85°C
- Durability : 500 Mating cycles Min.
- This item can meet the wave temperature 260 °C for 5 sec.

Ho Chien
www.hochien.com

TITLE **RJ45 2X1 8 POSITIONS**
DOUBLE DECK GANG SHIELDED JACK
UL & cUL FILE NO. E131820

MODULAR JACKS ASSY FOR
7600-088-21-XXX

SCALE SIZE DWG. NO. 7600 SERIES

NOT SCALED DRAWING	TOLERANCE UNLESS OTHERWISE NOTICE	INCH	MM	DR.	DATE
<p>THIRD ANGLE PROJECTION</p>	LINEAR	.00±0.01 .000±0.005 .0000±0.002	.00±0.25 .000±0.13 .0000±0.05	CK'D	
	ANGLE	+0°30'	RADII	+0.45 -0.15	APP'D