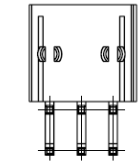
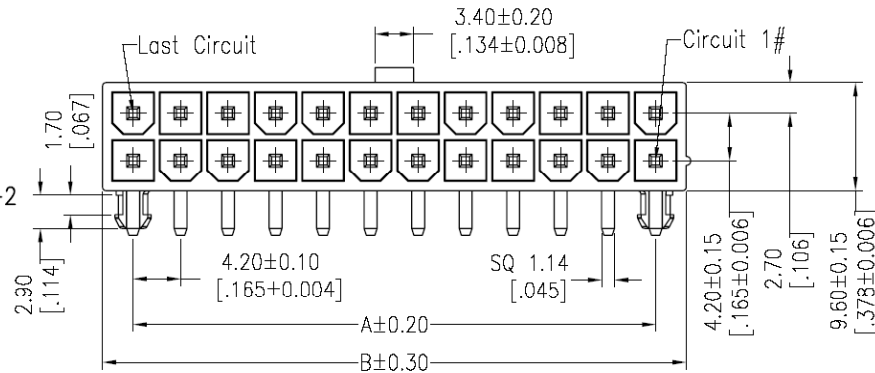


HSF

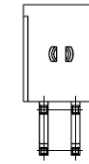
NOTES:
 Rated Current:15AMP
 Contact Resistance:30mΩ max
 Withstand Voltage:1500V AC/minute
 Insulation Resistance:1000MΩ min
 Operation Temperature:-25°C to +85°C

Contact Material:Brass
 Contact Plating:Sn Over Ni
 Insulator Material:PA66+15%G.F UL94V-2

Recommended P.C.B Layout(Top Side)
 (PCB BOARD TOLERANCE±0.05)

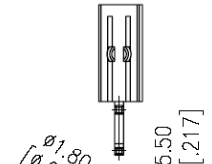


2*3P-2*12P



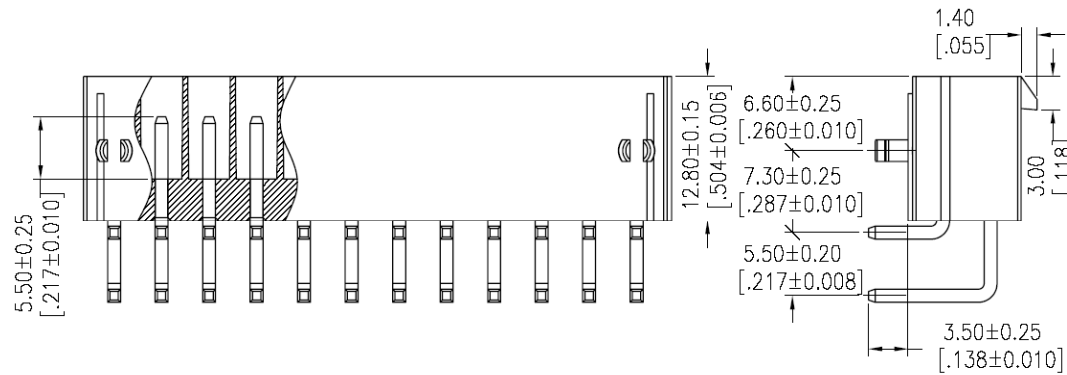
2.10 [.083]

2*2P



2*1P

Scale 2:3

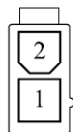


Dimensional & Ordering Information

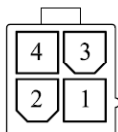
Circuit	Part No.	Dimension		Pcs /Tray
		A	B	
2x01	4201RE-02	---	5.40	410
2x02	4201RE-04	4.20	9.60	230
2x03	4201RE-06	8.40	13.80	160
2x04	4201RE-08	12.60	18.00	130
2x05	4201RE-10	16.80	22.20	100
2x06	4201RE-12	21.00	26.40	80
2x07	4201RE-14	25.20	30.60	70
2x08	4201RE-16	29.40	34.80	60
2x09	4201RE-18	33.60	39.00	60
2x10	4201RE-20	37.80	43.20	50
2x11	4201RE-22	42.00	47.40	50
2x12	4201RE-24	46.20	51.60	40

REV	DATE	MODIFICATION DESCRIPTION	CHANGE	APPROVE	OPERATION		DRAW	William Chen	09.09.12	SCALE	1:1	HO CHIEN	
					X.X	±0.40						www.hochien.com	
A1	09/09/12	Packing code from "0" to "A"	---	---	X.XX	±0.25	DESIGN			UNIT	mm	PART NO.	4201RE-XX
A0	08/08/04	NEW	---	---	X.XXX	±0.15	CHECK			SIZE	A4	TITLE:	4.20 MINI FIT DUAL ROW 90° WITH POST
					Angle	± 3'	APPROVE			SHEET	1/2	Customer NO.	
					DIM	TOL				PROJ.			

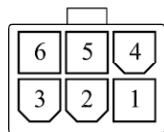
HSF



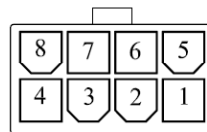
2x01P



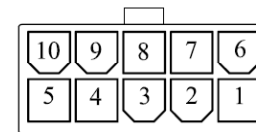
2x02P



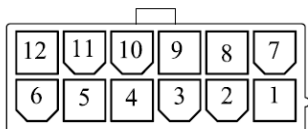
2x03P



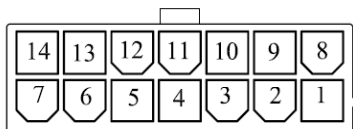
2x04P



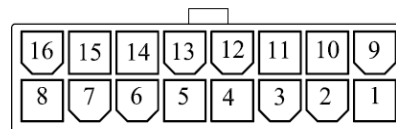
2x05P



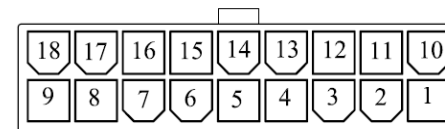
2x06P



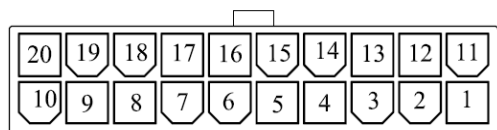
2x07P



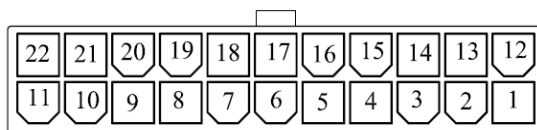
2x08P



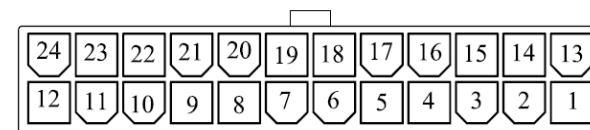
2x09P



2x10P



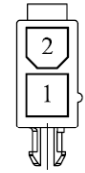
2x11P



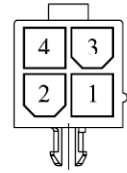
2x12P

						OPERATION	DRAW	<i>William Chen</i>	<i>09.09.12</i>	SCALE	1:1	HO CHIEN www.hochien.com	
						X.X	±0.40	DESIGN		UNIT	mm		
A1	09/09/12	Packing code from "0" to "A"		_____	_____	X.XX	±0.25	CHECK		SIZE	A4	TITLE:	4.20 MINI FIT DUAL ROW 90° WITHOUT POST
A0	08/08/04	NEW		_____	_____	X.XXX	±0.15	APPROVE		SHEET	2/2	Customer NO.	
REV	DATE	MODIFICATION	DESCRIPTION	CHANGE	APPROVE	Angle	± 3'			PROJ.			
						DIM	TOL						

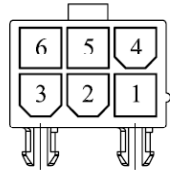
HSF



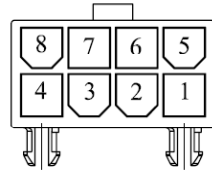
2x01P



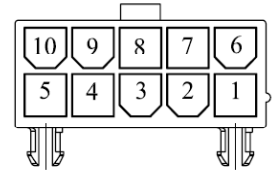
2x02P



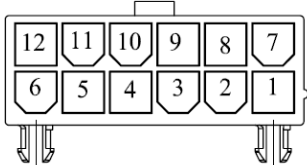
2x03P



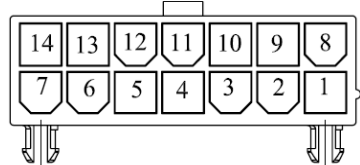
2x04P



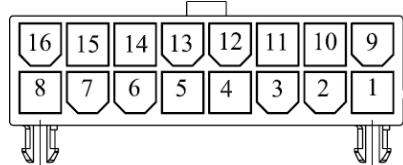
2x05P



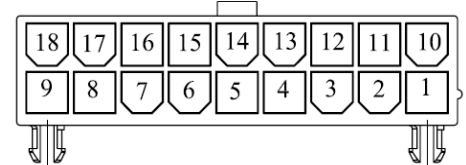
2x06P



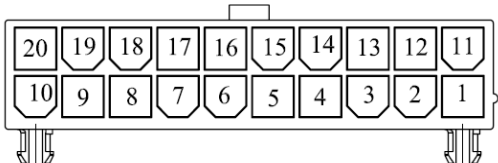
2x07P



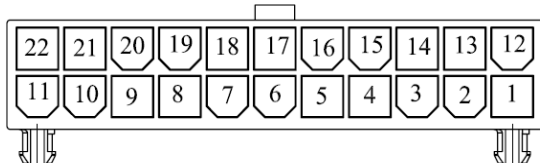
2x08P



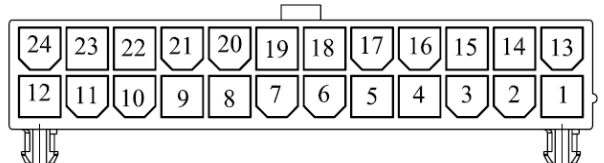
2x09P



2x10P



2x11P



2x12P

					OPERATION	DRAW	<i>William Chen</i>	<i>09.09.12</i>	SCALE	1:1	HO CHIEN www.hochien.com	
					X.X	±0.40	DESIGN		UNIT	mm		
A1	09/09/12	Packing code from "0" to "A"			X.XX	±0.25	CHECK		SIZE	A4	PART NO.	WF4202-2WRXXWA2
A0	08/08/04	NEW			X.XXX	±0.15	APPROVE		SHEET	2/2	TITLE:	4.20 MINI FIT DUAL ROW 90° WITH POST
REV	DATE	MODIFICATION	DESCRIPTION	CHANGE	APPROVE	Angle DIM	± 3' TOL	APPROVE	PROJ.		Customer NO.	