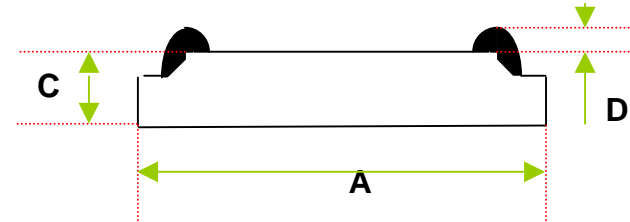
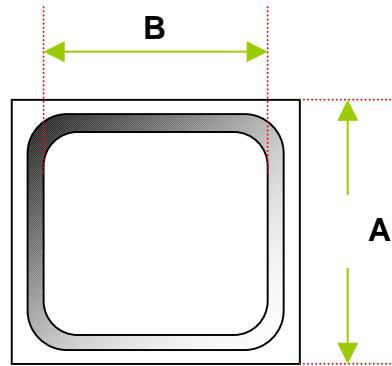




DICE SPEC.

Product : HER GPP(EPI)

DATE: 2005/12/30

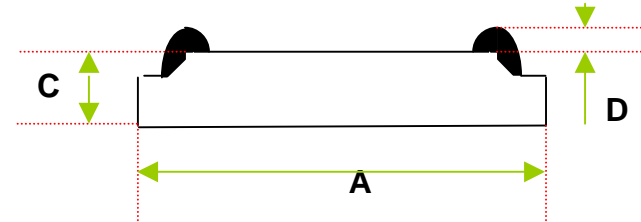
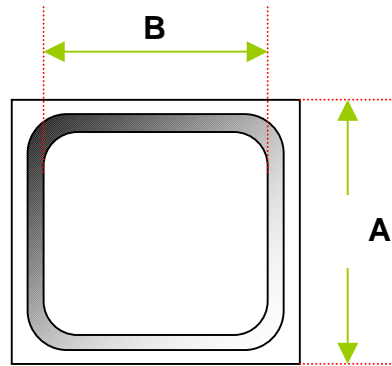


Dice size	mil	31	35	41	46	50	58	62	71	79	84	87	95	98	115	132	
Dice dimension (mil)	A	31±2	35±2	41±2	46±2	50±2	58±2	62±2	71±2	79±2	82±2	87±2	93±2	98±2	115±2	132±2	
	B (min.)	16	19	23	26	28	36	37	46	57	60	64	68	73	93	110	
	C	11.5±2															
	D (max)	2															
Metallization		Ni/Ni/Au (Back & Front Side) or Al(Front Side) / Ag(Back Side)															
IF A	200/400V	0.5	0.8	1		2			3	5	8	10			15	20	
	600V		0.5	1			2		3		6	8	10		12.5	15	20
VF@ IF V(max.)	200V	0.98															
	400V	1.22															
	600V	1.67															
VR @ IR V(min.)	200V	230V															
	400V	430V															
	600V	630V															
TRR@ RG1 ns(max)	200/400V	48															
	600V	73															
IR	uA	2											5				
IFSM (min.)	A	10	20	30	40	50	65	80	100	125	150	175	200	200	250	300	
Dice total yield %		95															



DICE SPEC.

Product : HER GPP(EPI)

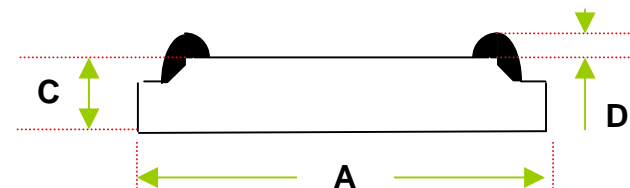
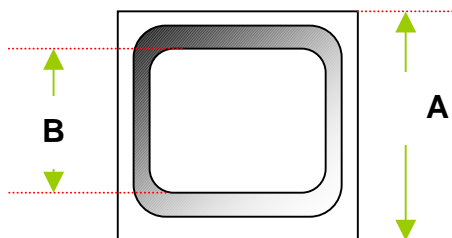


Dice size	mil	140	160	165	180	195	215	298									
Dice dimension (mil)	A	139±2	160±2	165±2	180±2	195±2	215±2	298±2									
	B (min.)	112	136	139	154	165	188	270									
	C	11.5±2															
	D (max)	2															
Metallization		Ni/Ni/Au (Back & Front Side) or Al(Front Side) / Ag(Back Side)															
IF A	200/400V	25	30			40	50	70									
	600V		25	30		40	50	60									
VF@ IF V(max.)	200V	0.98															
	400V	1.22															
	600V	1.67															
VR @ IR V(min.)	200V	230V															
	400V	430V															
	600V	630V															
TRR@ RG1 ns(max)	200/400V	48	48	48	50	55	55	80									
	600V	73	73	73	75	75	90	100									
IR	uA	10															
IFSM (min.)	A	300	350	350		400	500	600									
Dice total yield %		95															



DICE SPEC.

Product : HER GPP(NON-EPI)



Dice size	mil (mm)	35 (0.9)	41 (1.04)	50 (1.26)	58 (1.48)	71 (1.8)	79 (2.0)	84 (2.1)	87 (2.21)	95 (2.41)	98 (2.5)	110 (2.76)	115 (2.92)	120 (3.06)	132 (3.36)	140 (3.54)	160 (4.1)	
Dice dimension (mil)	A	35±2	41±2	50±2	58±2	71±2	79±2	82±2	87±2	93±2	98±2	108±2	115±2	120±2	132±2	139±2	160±2	
	B (min.)	19	23	28	35	46	56	59	64	68	73	85	91	96	108	112	136	
	C	9±2																
	D (max)	2																
Metallization		Ni/Ni/Au (Back & Front Side)																
IF A	200V	0.5	0.8	1	1.5	2					3		5		6	8	10	
	400V	0.5	0.8	1	1.5	2			3			5		6	8	10		
	1000V				1	1.5	2				3		5		6	8	10	
VF@ IF V(max)	200V	0.99																
	400V	1.27																
	1000V	1.67																
VR @ IR	V(min)	230V/430V/630V/840V/1050V																
TRR@ RG1 ns(max)	400V	48																
	1000V	73																
IR	uA	2									5							
IFSM (min.)	A	10	20	30	30	50	80		100	125	150	200	200	250	250	300	350	
Total yield %		90																