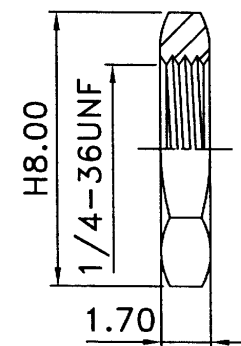
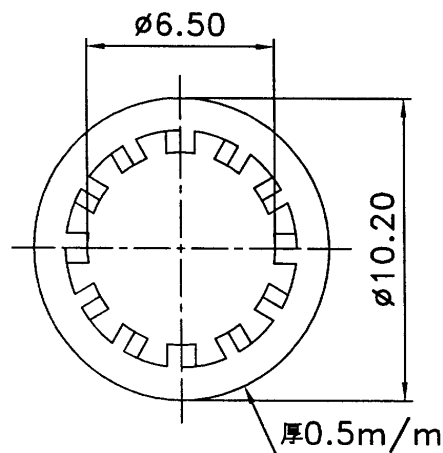
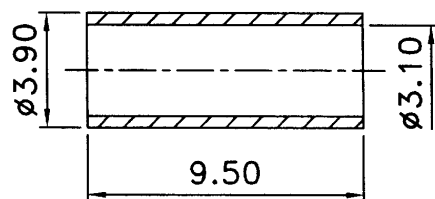
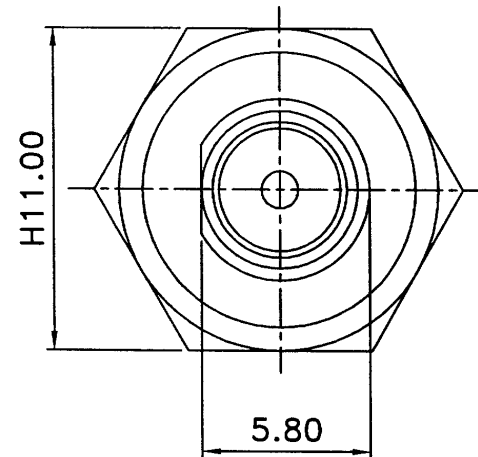
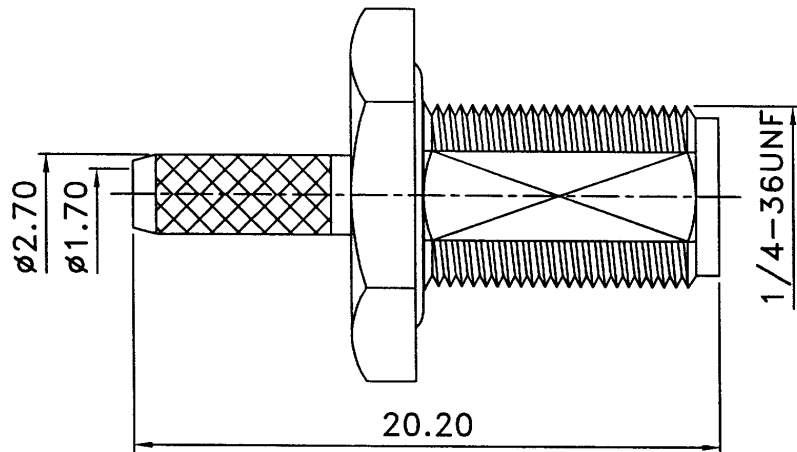
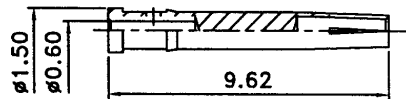


REV	DESCRIPTION	DRAWN	DATE



7	Nut(N-004)	1	Brass	Gold
6	Washer(W-008)	1	Brass	Gold
5	Ferrule(F-002-CP)	1	Copper	Gold
4	"O" Ring(G-042-R)	1	Rubber	Black
3	Dielectric(T-00025)	1	Teflon	None
2	Pin(C-00033-BU)	1	Beryllium	Gold
1	Body(B-00030)	1	Brass	Gold
NO	Description	Q'ty	Material	Finish

UNLESS OTHERWISE SPECIFIED
 1.REMOVE ALL BURRS.
 2.BREAK ALL CONNERS & EDGES CO.15 MAX.
 3.CHAMFER 1ST & LAST THREADS 45°.
 4.DIAMETERS ON COMMON CENTERS.
 TO BE CONCENTRIC WITHIN 0.1 TLR.
 5.ALL DIMENSIONS ARE AFTER PLATING.

* MAJOR DIMENSION
 UNLESS OTHERWISE NOTED TOLERANCES
 0.5-6=±0.2
 6-30=±0.4
 30-120=±0.6
 120-315=±1.0
 ANGLES=±1°

APPROVED
 CHECKED
 DRAWN 江昱緯
 DRAWN DATE 07/19/02

HO CHIEN
 www.hochien.com
 TITLE SMA FEMALE BULKHEAD CRIMP
 DRAWING NO. SMA-1012-L5-TGG
 REV A
 FILE NO. D:\DWG\COMPOSE\SMA\SMA-1012-L5-TGG