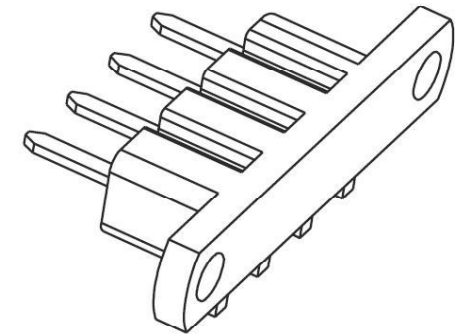
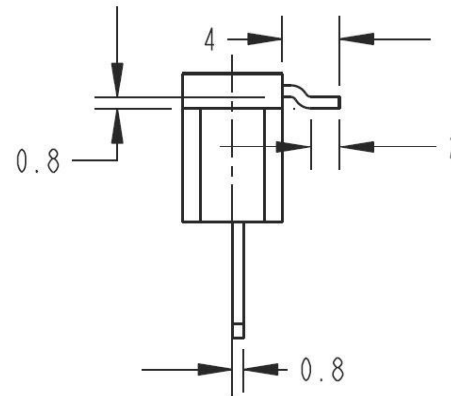
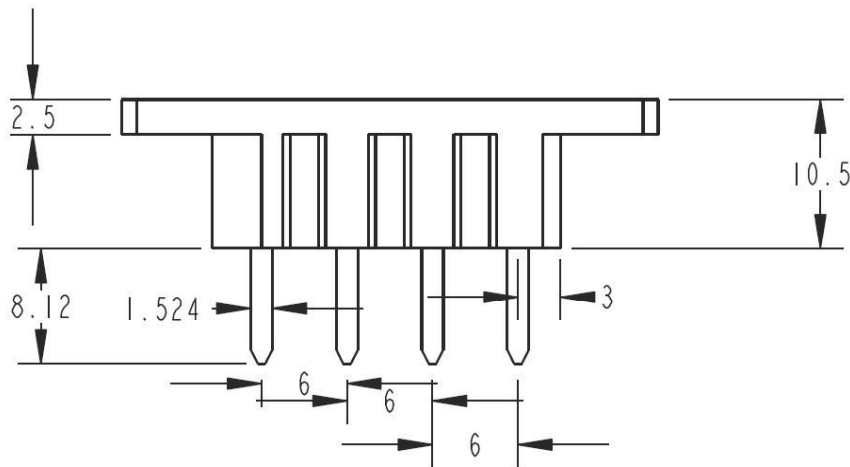
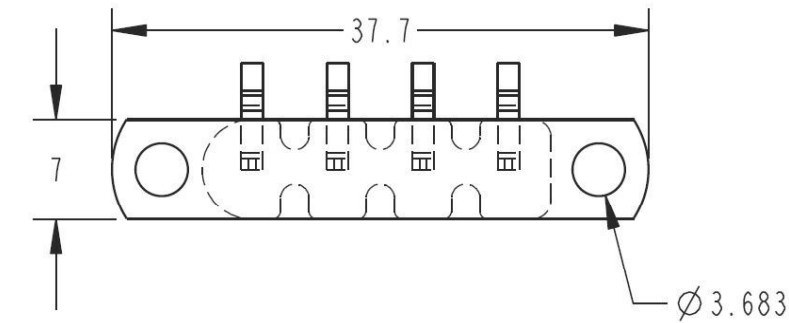


REV.	DESCRIPTION	EP/ECO	NAME/DATE	CHECKED BY: DATE
A	-	-	-	-

NOTES:

- PIN BASE MATERIAL: CDA-210 GILDING, EXTRA SPRING TEMPER
PLATING .005±.0025 MM THICK MATTE TIN
- CARRIER MTL: PLASTIC N6 NYLON TOHS
- PART TO REFLOW ON LEAD FREE SURFACE
MOUNT PROCESS. MAX REFLOW TEMP 260°C
- PACKAGING - TAPE REEL



-	2	-				
-	1	-				
QTY. REQ.	ITEM NO.	PART NUMBER	DESCRIPTION			
XXXXXX	PART NUMBER	UNLESS OTHERWISE SPECIFIED TOLERANCE ON				
		DECIMALS OF A MM		ANGLES		
		.XX ± .50	.XXX ± .250	± 1 °	MATERIAL- MANUFACTURED	
		DIM. IN [] ARE IN		SCALE: 2.000		SHEET 1 OF 1
		DRAWN BY: X XXX		DATE:		TOOL NO. N/A
		CREATED ON : PRO ENGINEER		DWG. NO. CM-B6102-0001		REV.