

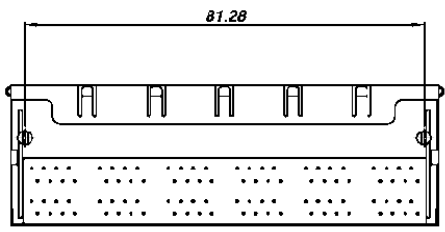
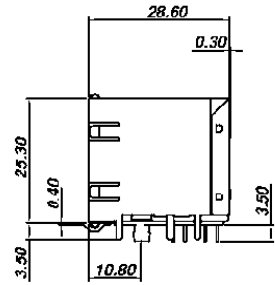
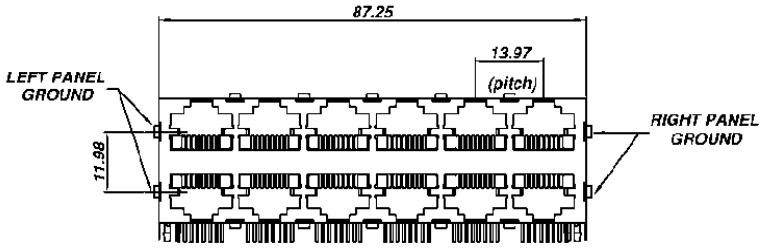
SPECIFICATION :

1. Electrical Char.

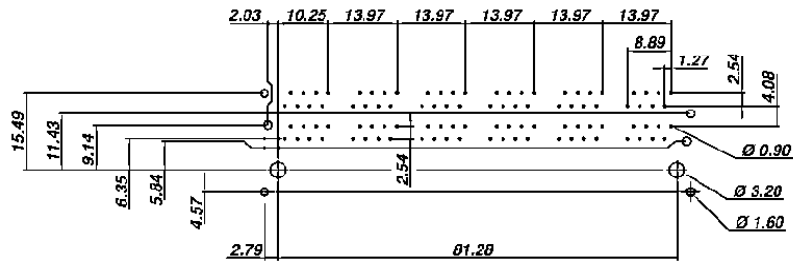
- Insulation Resistance : 500M-Ohm Min.
- Contact Resistance : 20milli-Ohm Max.
- Rating Current : 1.5A Max.
- Rating Voltage : 120V AC.
- Dielectric Voltage : 1,000 Vrms 60 Sec. Min.

2. Physical char.

- Housing : PBT Glass Filled (UL 94V-0)
- Color : Black Color
- Spring Wire : 0.35mm Thickness Phosphor Bronze
Gold Plating Over Nickel.
- Temperature Range : - 40°C / +85°C
- Durability : 500 Mating cycles Min.



PANEL GROUND MODE



PCB LAYOUT (Top View)

HC-600-26-F-LXB



HO CHIEN
www.hochien.com

TITLE	DOUBLE DECK GANG PCB JACK UL & cUL FILE NO. E131820	
	MODULAR JACKS ASSY FOR HC-600-26-F-LXB	
	SCALE SIZE DWG. NO.9600 SERIES	

NOT SCALED DRAWING	TOLERANCE UNLESS OTHERWISE NOTICE	INCH	MM	DR.	DATE
THIRD ANGLE PROJECTION	LINEAR	00±0.01 000±0.005 0000±0.002	00±0.25 000±0.13 0000±0.05	Steven CK'D John APP'D Billy	JUN-22 '06 JUN-22 '06 JUN-22 '06
	ANGLE +0°30'	RADIL	+0.45 -0.15		

DWG. NO. **AS600018-1**