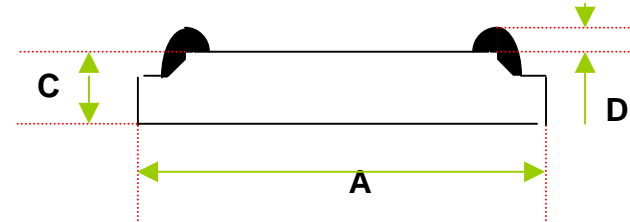
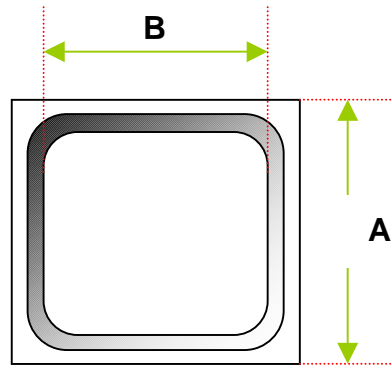




# DICE SPEC.

## Product : STD GPP

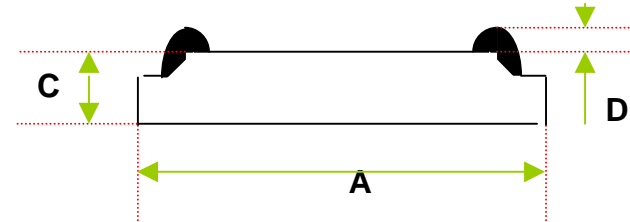
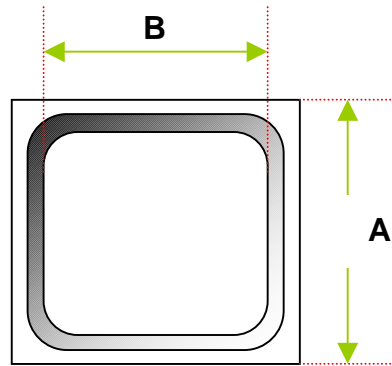


IF	A	1	1	2	2	3	4	4	6	6	7.5	7.5	12.5	15	17.5	20	30	
Dice size	mil (mm)	46 (1.18)	50 (1.26)	58 (1.48)	62 (1.56)	71 (1.8)	84 (2.1)	87 (2.21)	95 (2.41)	98 (2.5)	110 (2.76)	115 (2.92)	130 (3.26)	140 (3.54)	160 (4.1)	165 (4.2)	180 (4.57)	
Dice dimension (mil)	A	46±2	50±2	58±2	62±2	71±2	82±2	87±2	93±2	98±2	108±2	115±2	130±2	139±2	160±2	165±2	180±2	
	B (min.)	26	26.5	36	38	46	60	64	68	73	85	93	108	112	136	139	154	
	C	10±1																
	D (max)	2																
Metallization	Ni/Ni/Au (Back & Front Side)																	
V <sub>F</sub> @ I <sub>F</sub> (max.)	V	1.02	0.98	1.02	0.98	1.02	1.02	0.98	1.02	1.02	1.02	1.02	1.02	1.02	1.02	1.05	1.05	
V <sub>R</sub> @ I <sub>R</sub> (min.)	1000V	1100V																
	800V	900V																
	600V	720V																
I <sub>R</sub>	uA	2											5					
I <sub>FSM</sub> (min.)	A	30	35	50	60	100	125	125	150	150	200	250	300	350	400	400	450	
Sharp % (5uA)	92																	
Dice total yield %	98																	



# DICE SPEC.

## Product : STD GPP(High Voltage)

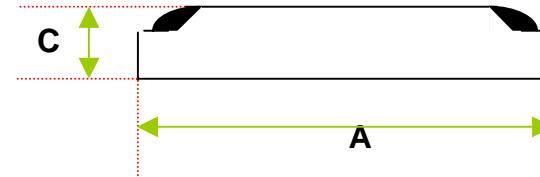
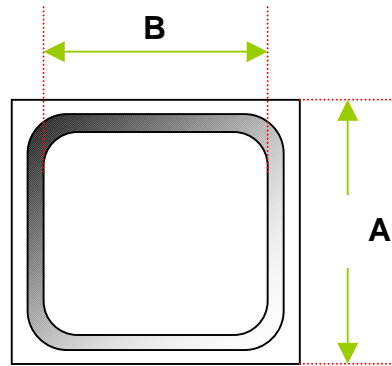


IF	A	1	2	4	7.5	25	25	30	40	50	70	85	90	100	150	300	
<b>Products</b>	<b>mil (mm)</b>	50 (1.26)	58 (1.48)	84 (2.1)	115 (2.92)	160 (4.1)	165 (4.2)	180 (4.57)	195 (4.96)	215 (5.46)	298 (7.56)	354 (9.0)	395 (10.0)	484 (12.3)	520 (13.2)	700 (17.8)	
<b>Dice dimension (mil)</b>	<b>A</b>	50±2	58±2	82±2	115±2	160±2	165±2	180±2	195±2	215±2	298±2	354±2	395±2	139±2	520±2	700±2	
	<b>B (min.)</b>	26.5	36	58	93	136	139	150	160	180	260	315	355	445	480	660	
	<b>C</b>	12±1															
	<b>D (max)</b>	2															
<b>Metallization</b>		Ni/Ni/Au (Back & Front Side)															
<b>V<sub>F</sub>@ I<sub>F</sub> (max.)</b>	<b>V</b>	1.1															
<b>V<sub>R</sub>@ I<sub>R</sub> (min.)</b>	<b>1600V</b>	1700V															
	<b>1400V</b>	1500V															
	<b>1200V</b>	1300V															
<b>I<sub>R</sub></b>	<b>uA</b>	2				5					10						
<b>I<sub>FSM</sub> (min.)</b>	<b>A</b>	30	40	100	200	300	300	350	400	500	700	900	1000	1250	1500	3000	
<b>Sharp % (5uA)</b>		90															
<b>Dice total yield %</b>		95															



# DICE SPEC.

## Product : STD GPP(Surface ground)



IF	A	0.2	0.5	0.5	0.8	1	1	2	12.5	20						
Products	mil (mm)	25 (0.62)	31 (0.8)	35 (0.9)	41 (1.04)	46 (1.18)	50 (1.26)	58 (1.48)	132 (3.36)	165 (4.2)						
Dice dimension (mil)	A	25±2	32±2	35±2	41±2	46±2	50±2	58±2	132±2	165±2						
	B (min.)	13.5	19.5	22	27.5	30	32	40	114	148						
	C	9±1			10±1											
Metallization		Ni/Ni/Au (Back & Front Side)														
V <sub>F</sub> @ I <sub>F</sub> (max.)	V	1.02	1.02	0.98	0.98	1.02	0.98	1.02	1.02	1.02						
V <sub>R</sub> @ I <sub>R</sub> (min.)	1000V					1100V										
	800V				900V	900V										
	600V		660V			720V										
	400V	480V														
I <sub>R</sub>	uA	2							5							
I <sub>FSM</sub> (min.)	A	10	15	15	25	35	45	60	300	400						
Sharp % (5uA)		92														
Dice total yield %		95														