

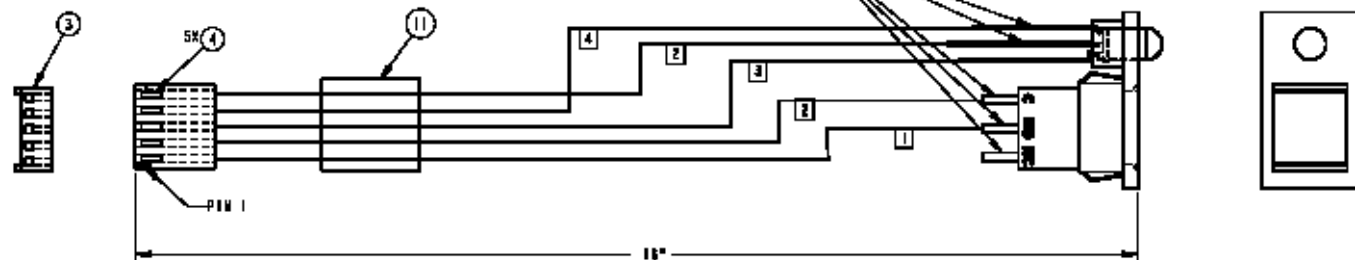
NOTES:

(UNLESS OTHERWISE SPECIFIED)

1. WIRING AND TUBING USED IN THE CABLE ASSEMBLY MUST BE UL RECOGNIZED.
2. CONNECTORS AND ALL OTHER COMPONENTS MUST BE UL RECOGNIZED OR MADE OF A UL RECOGNIZED MATERIAL WITH A MINIMUM FLAME RATING OF 64Y-2.
3. TRACEABILITY OF THE ABOVE MUST BE MAINTAINED BY THE VENDOR AND BE MADE AVAILABLE UPON REQUEST.
4. SOLDER WIRES TO SWITCH AND LED. COVER SOLDER CONNECTIONS TO LED AND SWITCH WITH SHRINK TUBE, ITEM 9.
5. TIE WIRES TOGETHER WITH 3 WIRE TIED EVENLY SPACED, ITEM 10.

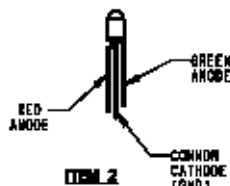
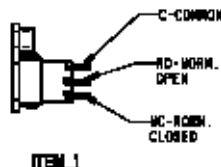
REV.	REV. REASON	DESCRIPTION	DATE	APPROV.
A	1374	PRODUCTION RELEASE	07-03-01	EAF
B	1505	ADD NOTE 6, ITEM 1 EQUIVALENT	05-15-02	EAF

- ⑩ 1 APPROVED ALTERNATIVE SWITCH:
ELECTRO SWITCH P/N P515-1124H



PIN OUT		
5 COND.	LED/SWITCH	WIRE NO.
1	NO	1
2	C	2
3	RED	3
4	GREEN	4
5	GND	5

WIRE TABLE					
WIRE NO.	LENGTH	COLOR	GAUGE	INSUL.	QTY.
1	16"	BLUE	24	UL1007	1
2	16"	BLACK	24	UL1007	2
3	16"	RED	24	UL1007	1
4	16"	GREEN	24	UL1007	1



ITEM	QTY.	DESCRIPTION	SUPPLIER	REFERENCE
11	1	LABEL, PART NUMBER, REVISION		
10	3	WIRE TIE, NYLON	SUPPLIER	
9	AR	SHRINK TUBE, BLACK	SUPPLIER	
8	AR	WIRE, 24 AWG, GREEN	SUPPLIER	
7	AR	WIRE, 24 AWG, RED	SUPPLIER	
6	AR	WIRE, 24 AWG, BLACK	SUPPLIER	
5	AR	WIRE, 24 AWG, BLUE	SUPPLIER	
4	5	CRIMP TERMINAL, P/N 08-50-0114	MOLEX	
3	1	CONNECTOR, 5 COND., POLARIZED LOCKING, P/N 22-01-3057	MOLEX	
2	1	LED, RED/GREEN, 5MM, P/N 5SL-L350010M	LUMEX	
1	1	SWITCH, PUSH BUTTON, MOM. W/FLD HOLE, FLUSH BLACK CAP P/N 8125-J84-238E22	CKX	

BILL OF MATERIALS			
APPROVALS	DATE	HO CHIEN	
DESIGNED BY: EAF	07-02-01	CABLE ASMT, POWER SWITCH, LED, CT PG BOX 42-1185	
DESIGNED BY: MED	07-03-01		
REVISED BY: 1374	07-03-01	CA-C4037A-0013	

NOTES:

(UNLESS OTHERWISE SPECIFIED)

1. WIRING AND TUBING USED IN THE CABLE ASSEMBLY MUST BE UL RECOGNIZED.
2. CONNECTORS AND ALL OTHER COMPONENTS MUST BE UL RECOGNIZED OR MADE OF A UL RECOGNIZED MATERIAL WITH A MINIMUM FLAME RATING OF 94V-2.
3. TRACEABILITY OF THE ABOVE MUST BE MAINTAINED BY THE VENDOR AND BE MADE AVAILABLE UPON REQUEST.
4. SOLDER WIRES TO SWITCH AND LED. COVER SOLDER CONNECTIONS TO LED AND SWITCH WITH SHRINK TUBE, ITEM 9.
5. TIE WIRES TOGETHER WITH 3 WIRE TIES EVENLY SPACED, ITEM 10.

NOTES FOR DRAWING 42-1185

B 6 APPROVED ALTERNATIVE SWITCH:
ELECTRO SWITCH P/N PS15-1124B

PIN OUT

5 COND	LED/SWITCH	WIRE NO.
1	NO	1
2	C	2
3	RED	3
4	GREEN	4
5	GND	2

WIRE TABLE

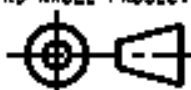
WIRE NO.	LENGTH	COLOR	GAUGE	INSUL.	QTY.
1	16"	BLUE	24	UL1007	1
2	16"	BLACK	24	UL1007	2
3	16"	RED	24	UL1007	1
4	16"	GREEN	24	UL1007	1

ITEM	QTY	DESCRIPTION	SUPPLIER
11	1	LABEL, PART NUMBER, REVISION	SUPPLIER
10	3	WIRE TIE, NYLON	SUPPLIER
9	AR	SHRINK TUBE, BLACK	SUPPLIER
8	AR	WIRE, 24 AWG, GREEN	SUPPLIER
7	AR	WIRE, 24 AWG, RED	SUPPLIER
6	AR	WIRE, 24 AWG, BLACK	SUPPLIER
5	AR	WIRE, 24 AWG, BLUE	SUPPLIER
4	5	CRIMP TERMINAL, P/N 08-50-0114	MOLEX
3	1	CONNECTOR, 5 COND., POLARIZED LOCKING, P/N 22-01-3057	MOLEX
2	1	LED, RED/GREEN, 5MM, P/N SSL-LX50991GW	LUMEX
B 6	1	SWITCH, PUSH BUTTON, MOM. W/LED HOLE, FLUSH BLACK CAP P/N 8125-J84-Z3BE22	C&K

BILL OF MATERIALS

UNLESS OTHERWISE SPECIFIED
DIMENSIONS ARE IN INCHES.
TOLERANCES ARE:
DECIMALS ANGLES
.XX ± 0.1 .X ± 0.5°
.XXX ± 0.02
.XXXX ± 0.010
DO NOT SCALE DRAWING

THIRD ANGLE PROJECTION



APPROVALS	DATE
DRAWN EAF	07-02-01
CHECKED MKD	07-03-01
APPROVED	
ECO 1374	07-03-01
WEIGHT	
FINISH	

HO CHIEN

CABLE ASSY, POWER SWITCH,
LED, CT PC BOX
42-1185

CA-C4037A-0013

SCALE 2:1

CAD FILE 42-1185

REV. **B**
1 of 1