

7	1	STR000001	STRAIN RELIEF -M16 x 1.5	SEALCON	CD17MA-BR
6	A/R	EXP05005002	CABLE-BULK, 5 COND., 19AWG	SAB	D1341905
5	2	THS000001-100	SLEEVE-HEAT SHRINK 1.0D LG	RAYCHEM	HTAT-12/3-0-STK
4	1	PO005600000	PLUG-SEALING	DEUTSCH	114017
3	1	CON000004	LOCK-WEDGE, 6 POS	DEUTSCH	W6P
2	5	TPN000001	TERMINAL PIN	DEUTSCH	0460-202-16141
1	1	CON000005	CONNECTOR-RECEPTACLE, 6 POS	DEUTSCH	DT04-6P
ITEM NO.	QTY REQ'D	DRAWING NO PART NO.	DESCRIPTION	VENDOR OR MATERIAL	VENDOR'S PART NO OR ROUGH STOCK SIZE

BILL OF MATERIAL

HO CHIEN
www.hochien.com

P/N#

CA-B6060-0008

DESCRIPTION

CABLE ASY-OIL LEVEL PROBE

N/A

REF N/A

SIZE

C

SCALE

1:1

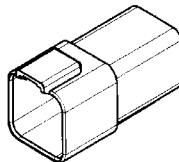
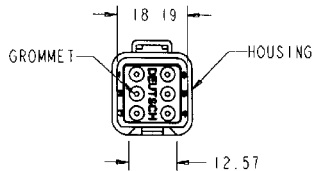
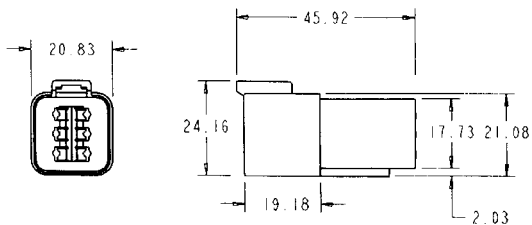
DRAWING NO.

EXA05005003

SHEET

1 of 1

REV	REV BY	DATE	DESCRIPTION OF CHANGE	APPROVED BY



SUPPLIER: DEUTSCH
PART NO.: DT04-6P

- NOTES:
- ALL DIMENSIONS ARE IN MM.
 - ALL DIMENSIONS ± 0.03 UNLESS OTHERWISE SPECIFIED
 - SECONDARY LOCK WEDGE, DEUTSCH P/N W6P
EMP P/N XEL10031
 - TYPICAL TERMINAL, DEUTSCH P/N 0460-202-16141, 18-16 AWG
EMP P/N: XEL10032
 - FOR MORE INFO SEE DEUTSCH DRAWINGS 0425-017-0000 & 0425-015-0000
 - MATERIAL- HOUSING: PLASTIC, GROMMET: RUBBER

UNLESS OTHERWISE SPECIFIED:

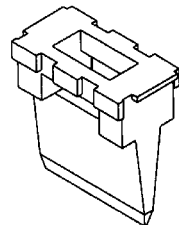
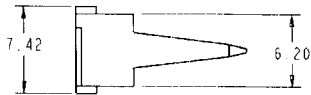
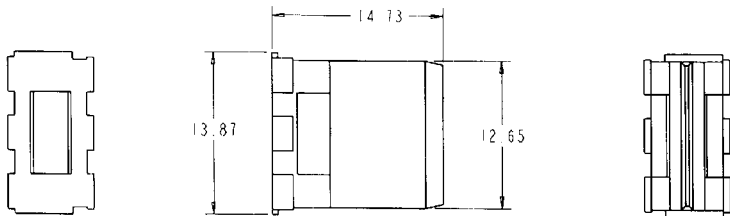
- ALL DIMENSIONING AND TOLERANCING IS IN ACCORDANCE WITH ASME Y14.5M 1994
- ALL DIMENSIONS ARE IN MILLIMETERS
- BREAK ALL SHARP EDGES
- ALL MACHINED SURFACE FINISHES: $\sqrt{}$
- DIMENSIONAL TOLERANCES ARE AS FOLLOWS:

X.X	: ± 0.78
X.XX	: ± 0.25
X.XXX	: ± 0.127
X.XXXX	: ± 0.0127
ANGLES	: $\pm 0.5^\circ$

CUSTOMER:	N/A
P/DT:	N/A
EMP PROJECT #:	N/A
PART NO.:	N/A
REV.:	N/A
PART DESC.:	N/A
FAMILY:	N/A
REFERENCE NO. OR CASTING NO.:	N/A
MATERIAL:	DUETSCH
ROUGH SIZE:	DT04-6P
EST. WT.	0.000
DO NOT SCALE THIS DRAWING	

<p>HO CHIEN</p> <p>www.hochien.com</p>			
P/N#		CA-B6060-0008	
DESCRIPTION:	CONNECTOR-RECEPT., 6 POS	Concept	SIZE
SCALE	DRAWING NO.:	REV A	B
1:1	CON000005		SHEET: 1 of 1

REV	REV BY	DATE	DESCRIPTION OF CHANGE	APPROVED BY



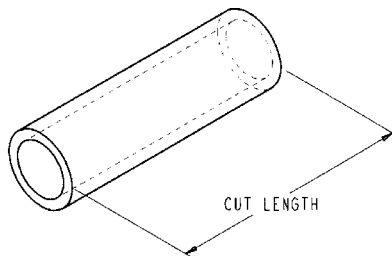
SUPPLIER: DEUTSCH
PART NO.: WGP

- NOTES:
1. ALL DIMENSIONS ARE IN MM
 2. ALL DIMENSIONS ± 0.63 UNLESS OTHERWISE SPECIFIED
 3. COLOR: GREEN
 4. THIS PART MATES WITH DEUTSCH P/N: D104-6P
EMP P/N: XEL10030

UNLESS OTHERWISE SPECIFIED:		CUSTOMER: N/A		<p style="text-align: center;">HO CHIEN</p> <p style="text-align: center;"><i>www.hochien.com</i></p>	
1. ALL DIMENSIONING AND TOLERANCING IS IN ACCORDANCE WITH ASME Y14.5M-1994		1. DR: N/A EMP PROJECT #: N/A			
2. ALL DIMENSIONS ARE IN MILLIMETERS		PART NO: N/A REV.: N/A			
3. BREAK ALL SHARP EDGES		PART DESC.: N/A			
4. ALL MACHINED SURFACE FINISHES: $\sqrt{32}$		FAMILY: N/A		P/ST#	
5. DIMENSIONAL TOLERANCES ARE AS FOLLOWS		REFERENCE NO: N/A		CA-B6060-0008	
XX : ± 0.25 XXX : ± 0.25 XXXX : ± 0.127 ANGLES : $\pm 0.5^\circ$		MATERIAL: DEUTSCH		DRW BY: JMJ DATE: 16MARD4 MODL BY: J.M. JOHNSON DATE: N/A CHK'D BY:	
		ROUGH SIZE: WGP		DESCRIPTION: LOCK-WEDGE, 6 POS.	
		EST. #1: 0.000		Concept SIZE B REV A	
		DO NOT SCALE THIS DRAWING		SCALE: 3:1 DRAWING NO.: CON000004 SHEET: 1 of 1	

HEAT SHRINK TUBING (HTAT)	
WALL STYLE	THIN
WALL TYPE	DUAL
LINING TYPE	ADHESIVE
MATERIAL	CROSSLINKED POLYOLEFIN
SHRINK RATIO	4:1
EXPANDED ID	0.472
RECOVERED ID	0.118
WALL THICKNESS- FULL RECOVERY	.055
FULL RECOVERY TEMPERATURE	110°C
SHRINK TEMPERATURE	80°C
OPERATING TEMPERATURE	-55°C TO +125°C
COLOR	BLACK
SUPPLIER	RAYCHEM HTAT-12/3-0-STK

EMP PART NO	CUT LENGTH
THS000001-050	0.50"
THS000001-100	1.00"
THS000001-150	1.50"
THS000001-200	2.00"



REV	REV BY	DATE	DESCRIPTION OF CHANGE	APPROVED BY

UNLESS OTHERWISE SPECIFIED:

- ALL DIMENSIONING AND TOLERANCING IS IN ACCORDANCE WITH ASME Y14.5M-1994.
- ALL DIMENSIONS ARE IN INCHES
- BREAK ALL SHARP EDGES.
- ALL MACHINED SURFACE FINISHES: $\sqrt{32}$
- DIMENSIONAL TOLERANCES ARE AS FOLLOWS:

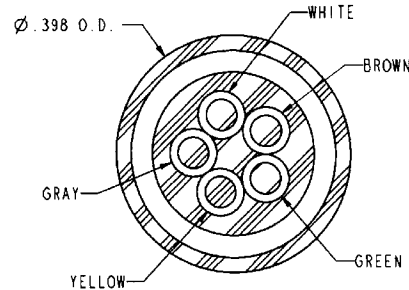
X.X	: ±0.1
X.XX	: ±0.01
X.XXX	: ±0.005
F.FRAC	: ±0.0005
ANGLES	: ±0.5°

CUSTOMER: 1.00 N/A EMP PROJECT # N/A	HO CHIEN www.hochien.com	CONFIDENTIALITY NOTICE: This drawing and all information contained therein contains confidential and/or proprietary information of Engineered Machine Products, Inc. which is legally privileged. Any reproduction of this drawing is strictly forbidden without the written consent of Engineered Machine Products, Inc.	
PART NO.: N/A REV.: N/A PART DESC.: N/A		P/N# CA-B6060-0008	DATE: 31MAR04
FAMILY: N/A REFERENCE NO. OR CASTING NO.: N/A	MATERIAL: C.L. POLYOLEFIN	MODEL BY: J. M. JOHNSON CNR'D BY: N/A	DATE: N/A
EST. WF: 0.000	DESCRIPTION: SLEEVE-HEAT SHRINK, CUT	Concept REV A	SIZE B
DO NOT SCALE THIS DRAWING	SCALE: 3:1	DRAWING NO.: THS000001-***	SHEET: 1 of 1

CHARACTERISTICS

CONDUCTOR	
NUMBER OF CONDUCTORS	5
WIRE GAUGE	19 AWG
STRANDING	23x32
CONDUCTOR MATERIAL	TINNED COPPER STRANDS
INSULATION MATERIAL	SILICONE
INSULATION COLOR	BLACK
CONDUCTOR COLORS	
1	BLACK
2	WHITE
3	RED
4	GREEN
5	ORANGE
INNER JACKET	
JACKET MATERIAL	SILICONE
SCREEN/SHIELD	
SHIELD TYPE	TINNED-COPPER STRANDS
OUTER JACKET	
JACKET MATERIAL	SILICONE
JACKET WALL THICKNESS	.014" NOMINAL
OVERALL DIAMETER	.398" NOMINAL
MECHANICAL CHARACTERISTICS	
OPERATING TEMP RANGE	-40°C TO +180°C
BULK CABLE WEIGHT	124 lbs/mft
PULLING TENSION	58 LBS MAX.
MINIMUM BEND RADIUS	5 x O.D.
ELECTRICAL CHARACTERISTICS	
DIELECTRIC CONSTANT	APPROX. 3.2 (@ 800 Hz)
SPECIFIC VOLUME RESISTANCE	MIN. 10 ¹² Ω x cm
BREAKDOWN VOLTAGE	20 kV/mm
MAX. OPERATING VOLTAGE, UL	600 VOLTS RMS
MAX. CONTINUOUS CURRENT	15 AMPS/CONDUCTOR @ 25°C

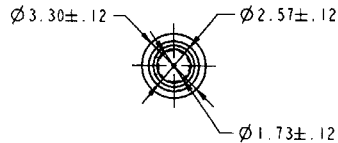
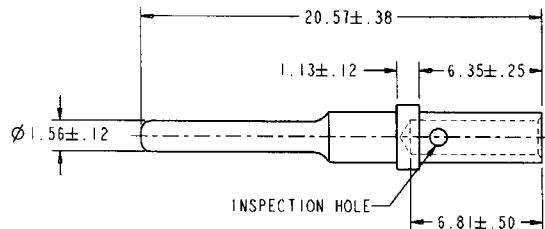
REV	REV BY	DATE	DESCRIPTION OF CHANGE	APPROVED BY
A	JMJ	14NOV05	EXPERIMENTAL	JMJ



MFG.: SAB
PART NO.: 01341905

UNLESS OTHERWISE SPECIFIED		CONFIDENTIALITY NOTICE: <i>This drawing and all information contained therein contains confidential and/or proprietary information of Engineered Machined Products, Inc. which is legally privileged. Any reproduction of this drawing is strictly forbidden without the written consent of Engineered Machined Products, Inc.</i>	
ALL DIMENSIONS ARE IN INCH.		HO CHIEN www.hochien.com	
ALL DIMENSIONING AND TOLERANCING IN ACCORDANCE WITH ASME Y14.5M-1994.		P/N# CA-B6060-0008	
DIMENSIONAL: ±.1 ±0.1 (18.75) TOLERANCES: ±.02 ±0.01 (10.25) ±.015 ±0.005 (10.127) ±.010 ±0.005 (10.127) ANGLES: ±0.5°		DRAWN BY: J. M. JOHNSON MODEL BY: J. M. JOHNSON DATE: 14NOV05 DATE: 19MAY05	
ALL MACHINED SURFACE FINISHES:		EMP PROJECTIFIED #	
EST. WT. 0.000		DESCRIPTION	
MATERIAL AND SPECIFICATIONS		CABLE-BULK, 5 COND, 19AWG	
DO NOT SCALE THIS DRAWING		DRAWING NO EXP05005002	
		SCALE: 6:1	
		SIZE: N/A	
		REV: B	
		SHEET 1 of 1	

REV	REV BY	DATE	DESCRIPTION OF CHANGE	APPROVED BY



SUPPLIER: DEUTSCH
PART NO.: 0460-202-16141

- NOTES:
1. FOR CRIMPING INFORMATION SEE DEUTSCH DRAWING 0425-205-0000
 2. DIMENSIONS ARE IN MM
 3. TERMINAL IS NICKEL PLATED
 4. FOR CONTACT PERFORMANCE AND APPLICATION CHARACTERISTICS SEE DEUTSCH DRAWING 0425-015-0000

CUSTOMER: N/A		<p>HO CHIEN</p> <p>www.hochien.com</p> <p>CA-B6060-0008</p>	<p>P/NH</p>	
I.D.P. N/A EMP. PROJECT #: N/A				
PART NO.:	N/A REV.: N/A			
PART DESC. N/A				
FAMILY: N/A				
REFERENCE NO. OR CASTING NO.: N/A		<p>DESCRIPTION: TERMINAL-PIN, SIZE 16</p>	Concept	SIZE
MATERIAL: DEUTSCH			REV A	B
ROUGH SIZE:	0460-202-16141		SCALE: 5:1	
EST. W/	0.000		DRAWING NO.: TPN000001	
DO NOT SCALE THIS DRAWING			SHEET: 1 of 1	